

# Lesson Plan 1

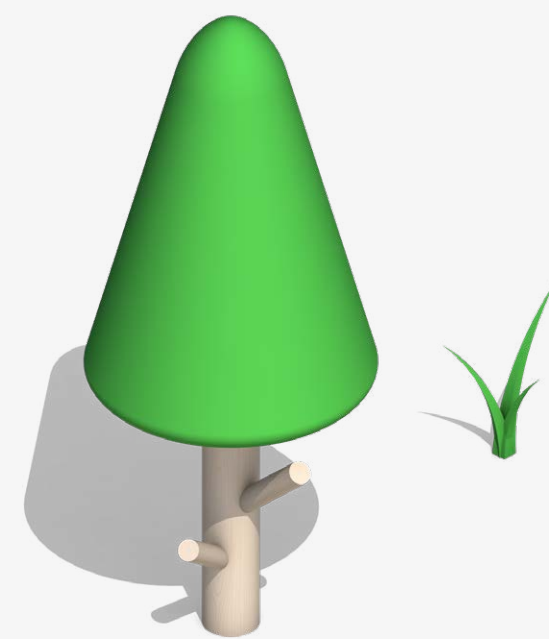
## Routes



### Outcomes

By the end of this section, students should be able to:

- Demonstrate how Movement TagTiles® work
- Make routes for KUBO to follow on the activity map

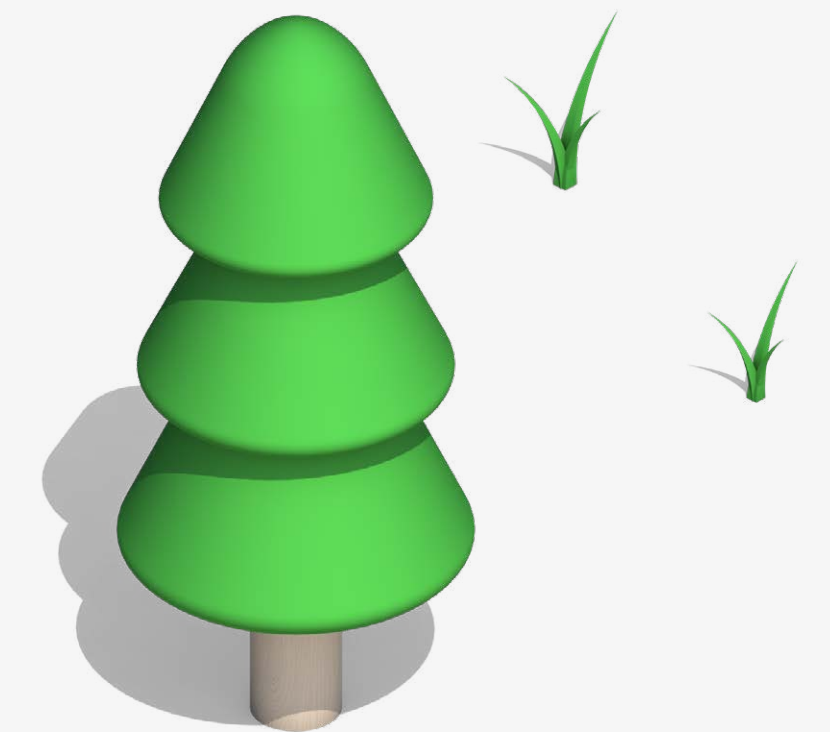
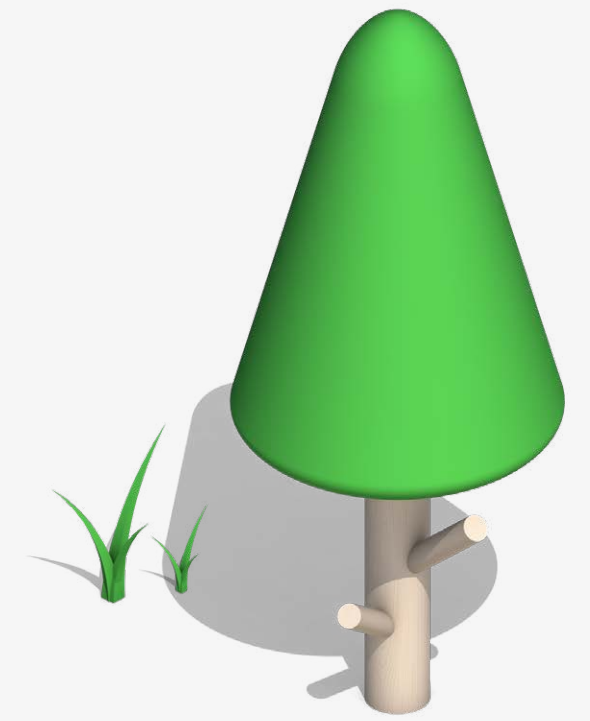
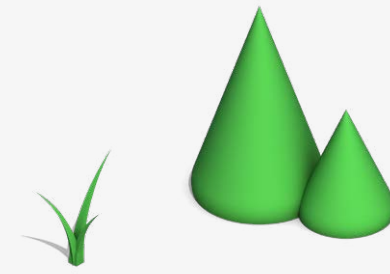


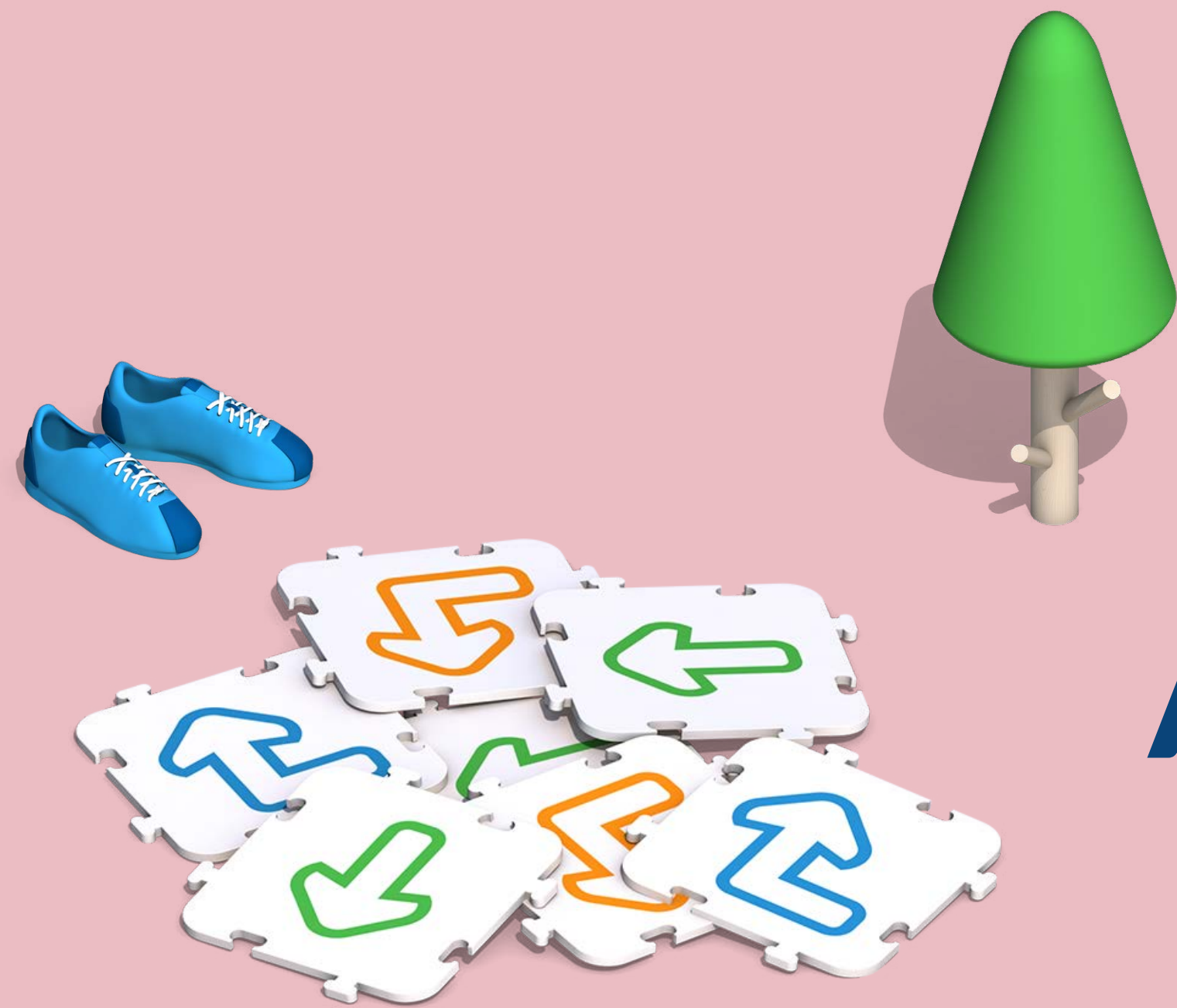
# Overview

## Routes - Lesson plan outline

<b>Activity 1: Be a robot (25 minutes)</b>	<b>3</b>
Materials	4
Tasks 1, 2 and 3	5
Reflection task	11
Extension activity ideas	12
<b>Activity 2: KUBO and the TagTiles® (25 minutes)</b>	<b>13</b>
Materials	14
Tasks 1, 2 and 3	15
Reflection task	21
Extension activity ideas	22
<b>Activity 3: KUBO's first day (25 minutes)</b>	<b>23</b>
Materials	24
Tasks 1, 2 and 3	25
Reflection task	29
Extension activity ideas	30

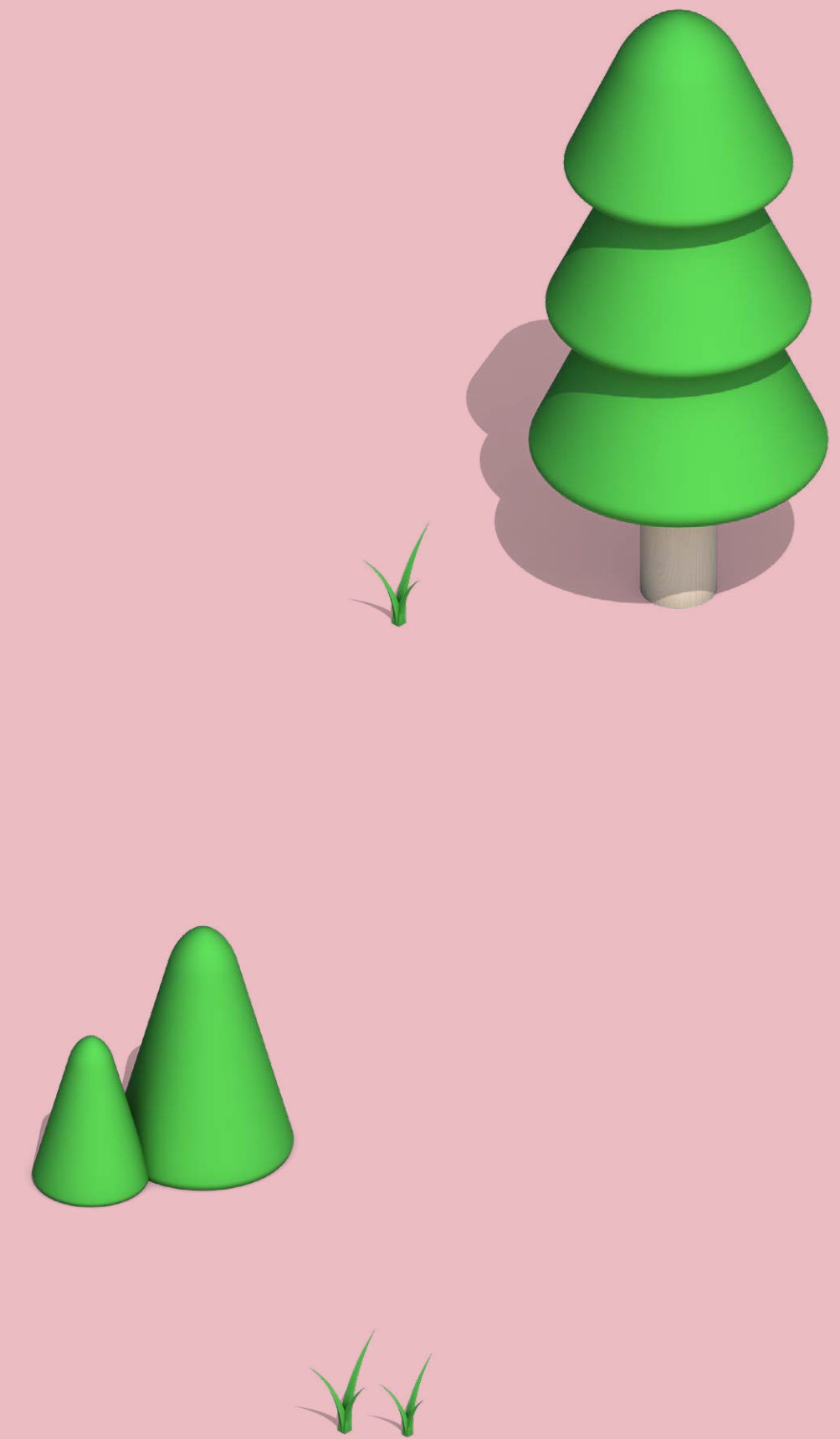
<b>Activity 4: Remembering routes (25 minutes)</b>	<b>31</b>
Materials	32
Tasks 1, 2 and 3	33
Reflection task	39
Extension activity ideas	40
<b>Assessment</b>	<b>41</b>
<b>Cross-curriculum connections</b>	<b>42</b>





# Activity 1

**Be a robot**  
(25 minutes)



## Outcomes

By the end of this section, students should be able to:

- Use your body to understand movement TagTiles®



# Want to see more?

Click here and get started with KUBO:

[portal.kubo.education](https://portal.kubo.education)

